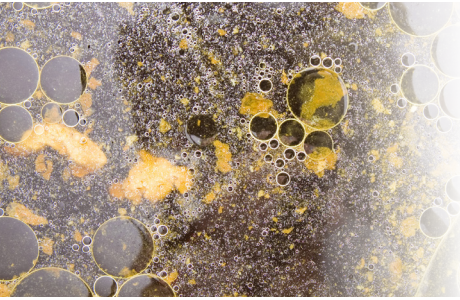


MAXIMUM POWER DRAIN CLEANER



INDUSTRIAL STRENGTH DRAIN CLEANER

FOR PROFESSIONAL USE ONLY

- A powerful liquid acid concentrate base on inhibited sulphuric acid
- 98% Sulphuric acid
- Instantly clears blocked drains and pipes
- Safe for ceramic surfaces – non staining and non chipping
- Will not attack metal or plastic pipes and drains
- Will not harm septic tank activity (use according to directions)
- Contains advanced corrosion inhibitors
- Odour controlled
- Safety-enhanced packaging

More advanced than competing formulas, Maximum Power Drain cleaner is a leading name in the plumbing industry. This powerful, high concentrate acidic formula solubilises all organic blockages, including:

- Cellulose Materials
hair, root systems, sanitary pads, fabric and paper
- Mineral Deposits
hard water scale, calcification, uric acid
- Organic Matter
grease, fats, sludge, carbohydrates, faecal matter
- Corrosion
lime scale, rust, built up laundry detergent residue and soap scum

WIDE SPECTRUM OF USE

Maximum Power Drain Cleaner is inhibited against attacking steel, iron, copper and brass fittings. Safe on plastic and PVC pipe and drain fittings. If used according to directions the acid will not harm septic tank activity.

THERMAL AGITATION

Strong exothermic reaction with water produces a boiling thermal agitation that assists in the loosening and solubilisation process. When used with extreme care, the exothermic reaction can be used to pressurise the system and increase the clean out reaction of the product.

EFFECTIVE INHIBITORS

DRAIN CLEANER is effectively inhibited against reaction with sound ferrous metals and has achieved, in standard laboratory testing, a 99.9% protection rate.



MAXIMUM POWER DRAIN CLEANER

SPECIFICATIONS

CAS 7664-93-9 | 60-98% Sulfuric Acid

Appearance: Colourless (pure) to brownish liquid, denser than water, choking fumes if heated, hygroscopic; mixes with water.

SAFE HANDLING

- DO NOT allow clothing wet with material to stay in contact with skin
- Avoid all personal contact, including inhalation.
- Wear protective clothing when risk of exposure occurs.
- Use in a well-ventilated area.
- WARNING: To avoid violent reaction, ALWAYS add material to water and NEVER water to material.
- Avoid smoking, naked lights or ignition sources.
- Avoid contact with incompatible materials.
- When handling, DO NOT eat, drink or smoke.
- Keep containers securely sealed when not in use.
- Avoid physical damage to containers.
- Always wash hands with soap and water after handling.
- Work clothes should be laundered separately. Launder contaminated clothing before re-use.
- Use good occupational work practice.
- Observe manufacturer's storage and handling recommendations contained within the SDS. Read before use.
- Atmosphere should be regularly checked against established exposure standards to ensure safe working conditions are maintained.

DIRECTIONS FOR USE:

TYPE	AMOUNT	PROCEDURE
Small drains	250ml	Allow to work for 5 min then flush with cold water for 3 min
75 -100mm drains	1 Litre	Allow to work for 15 min then flush with cold water for 15 min
150 -200mm drains	2 Litres	Allow to work for 15 min then flush with cold water for 15 min
Toilets	500ml	Reduce water level with a plunger. Add directly into bowl and flush immediately with cold water
Grease traps (initial)	1-2 Litres	Allow to work for 15 min then flush with cold water for 5 min



T: 1300 093 003

Door 2, 76-92 Station Street,
Nunawading VIC 3131

E: sales@maximumpoweraustralia.com.au

W: maximumpoweraustralia.com.au

MAXIMUM POWER DRAIN CLEANER

DIRECTIONS FOR USE

APPLICATION	PROCEDURE
SMALL DRAINS	Use 0.25 litre. Allow to work for 5 min then flush with cold water for 3 min
75 -100mm DRAINS	Use 1.0 litre. Allow to work for 15 min then flush with cold water for 15 min
150 -200mm DRAINS	Use 2.0 litres. Allow to work for 15 min then flush with cold water for 15 min
TOILETS	Use 0.5 litre. Reduce water level with a plunger. Acid directly into bowl and flush immediately with cold water
GREASE TRAPS	(Initial) Use 1.0-2.0 litres. Allow to work for 15 min then flush with cold water for 5 min. (Follow-Up) Use 0.25-0.5 litre i.e. 25% of original application for continuing control
SLOP SINKS	Use 1.0 litre. Reduce water level then pour directly into drain
CESSPOOLS	Insert into hose to bottom of the pool

DANGER

KEEP OUT OF REACH OF CHILDREN. FOR INDUSTRIAL AND MANUFACTURING USE ONLY. READ LABEL & SAFETY DATA SHEET BEFORE USE.

H290 MAY BE CORROSIVE TO METALS.

H314 CAUSES SEVERE SKIN BURNS AND EYE DAMAGE.



UN: 1830
SULPHURIC ACID with more than 51% acid
POISON: S6
HAZCHEM: 2P
CLASS: 8
PACKING GROUP: II

maximum power

DRAIN CLEANER

HIGHLY CONCENTRATED ACIDIC FORMULA.
INSTANTLY SOLUBILISES ALL ORGANIC BLOCKAGES.

Contains: **Sulfuric Acid 60-98%**

- HAIR
- PAPER & FABRIC
- SANITARY PADS / PRODUCTS
- VEGETATION & ROOT SYSTEMS
- MINERAL DEPOSITS & CALCIFICATION
- HARD WATER SCALE
- URIC ACID & FAECAL / ORGANIC MATTER
- FATS & GREASES
- CARBOHYDRATES
- CORROSION LIME SCALE
- RUST BUILD-UP
- LAUNDRY DETERGENT RESIDUES
- SOAP SCUM

Safe for ceramic surfaces - Non staining or chipping formula. Will not attack plastic pipes and drains. Will not harm septic tank activity when used according to directions. Contains advanced corrosion inhibitors. Odour controlled.

WARNING: To avoid violent reaction, ALWAYS add material to water and NEVER water to material. When handling, DO NOT eat, drink or smoke. DO NOT use aluminium or galvanised containers.

1L

PRECAUTIONS: RESPONSE

IF SWALLOWED: Rinse mouth. Do NOT induce vomiting.

IF ON SKIN (or hair): Remove/Take off immediately all contaminated clothing. Rinse skin with water/shower.

IF IN EYES: Rinse cautiously with water for several minutes. Remove contact lenses, if present and easy to do. Continue rinsing. Immediately call a POISON CENTER on 13 11 26 or doctor/physician.

Wash contaminated clothing before reuse. Absorb spillage to prevent material damage.

IF INHALED: Remove victim to fresh air and keep at rest in a position comfortable for breathing.

PRECAUTIONS: PREVENTION & STORAGE

Do not breathe vapours.

Wear protective gloves/protective clothing/eye protection/face protection.

Keep only in original container.

Store locked up.

MAXIMUM POWER

Door 2, 76-92 Station Street,

Nunawading VIC 3131

T: 1300 093 003

sales@maximumpoweraustralia.com.au

maximumpoweraustralia.com.au



9 347628 000038 >

PRODUCT CODE: SMPDRA1LBAGGED

SIZES	1L BAGGED
PRODUCT CODE	SMPDRA1LBAGGED



T: 1300 093 003

Door 2, 76-92 Station Street,
Nunawading VIC 3131

E: sales@maximumpoweraustralia.com.au

W: maximumpoweraustralia.com.au